

Quick Exhaust Valve

● Character

It is a one-way directional control element and can discharge the compressed air in the system rapidly. It is normally installed between the air cylinder and change valve and makes the air in the cylinder escape directly through this valve, not through change valve. It is applied to the locations where the quick discharge of pneumatic units or equipments are required.

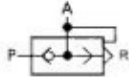


● QV-06

● QV-08

● QV-10

■ Graphics Sign



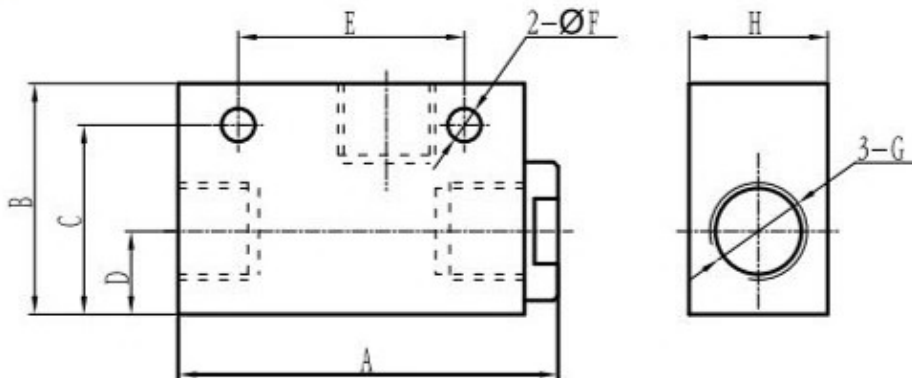
● Ordering Code



■ Technical Parameter

Item Specification	Pipe Size	Nominal Diameter (mm)	Min. Operating Pressure	Applicable Medium	Pressure Range	Medium Temperature
QV-06	G1/8	6	≥ 0.03 MPa	Air	0.05 ~ 1.2 MPa	-5 ~ 60°C
QV-08	G1/4	8				
QV-10	G3/8	10	≥ 0.04 MPa			
QV-15	G1/2	15	≥ 0.05 MPa			
QV-20	G3/4	20				
QV-25	G1	25				

■ Figure Dimension



Specification	A	B	C	D	E	F	G	H
QV-06	45	32	27	11	30	φ 4.3	G1/8	22
QV-08	61.5	40	32	16	39	φ 5.5	G1/4	26
QV-10	61.5	40	32	16	39	φ 5.5	G3/8	26
QV-15	99	60	50	20	60	φ 8.5	G1/2	40
QV-20	99	60	50	20	60	φ 8.5	G3/4	40
QV-25	113	75	63	26	80	φ 8.5	G1	50